

SCHMALENBACH

COMPANY PROFILE





CONTENTS

Best viewed with Acrobat in full screen. Use Esc key to go back to normal screen. Navigate by using your keyboard's left and right keys or select any topic above. Access the content list anytime by moving your mouse pointer to the right. →

ABOUT US



SCHMALENBACH

HANDMADE IN GERMANY

Founded in Germany, Schmalenbach is a renowned luxury brand exporting tailor made wardrobes and cabinet furniture worldwide. Started in 2002, it has gained popularity due to its ability to customise furniture based on individual requirements.

This custom-built furniture, allows customers to arrange their living, working and public space according to individual needs. The hand-made furniture is manufactured according to the required dimension, material and surface requirements.





AL GURG LIVING

With a portfolio of brands including Schmalenbach that fit the aspirational goals of a niche clientele, Al Gurg Living is the newest business unit within the Easa Saleh Al Gurg Group's Retail & Lifestyle portfolio.

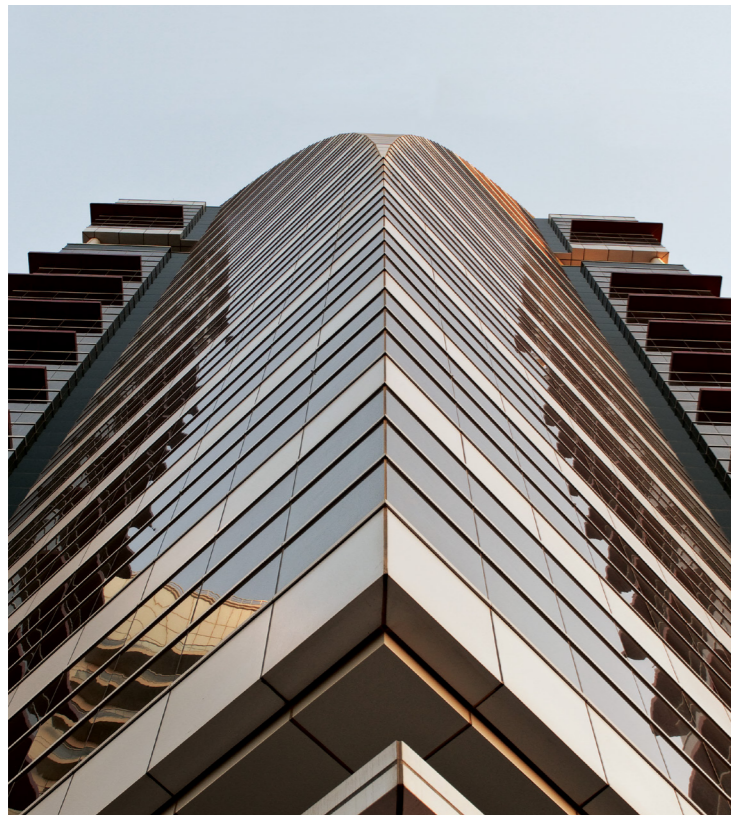
Al Gurg Living as the name suggests looks to address the needs of a high net worth client segment that prefers bespoke products and services. The entity showroom on Umm Hurair Road and d3 showcases SieMatic kitchens, La Cornue ovens and Schmalenbach wardrobes.



EASA SALEH AL GURG GROUP

Founded in 1960, by H.E. Easa Saleh Al Gurg (KCVO, CBE) the Easa Saleh Al Gurg Group LLC is a multi-divisional conglomerate with over 27 companies.

The Group has a range of diverse product and business interests that predominantly include retail, building and construction, industrial and joint ventures. With an active presence throughout UAE, Oman, Saudi Arabia and Iraq; its reach stretches across Asia, Middle East and the African continent, parts of America, Australia and New Zealand.



WHY SCHMALENBACH?

More and more people in the UAE aspire to create their cabinetry individually. Every Schmalenbach piece you order from us is customised and built with our guarantee of quality and durability.

- Custom-fit design
- Diligent craftsmanship
- Attention to detail
- Exudes individual style



PRODUCT RANGE



SCHMALENBACH

PRODUCT RANGE

Experience the variety of possibilities that we offer with our timeless and elegant systems.

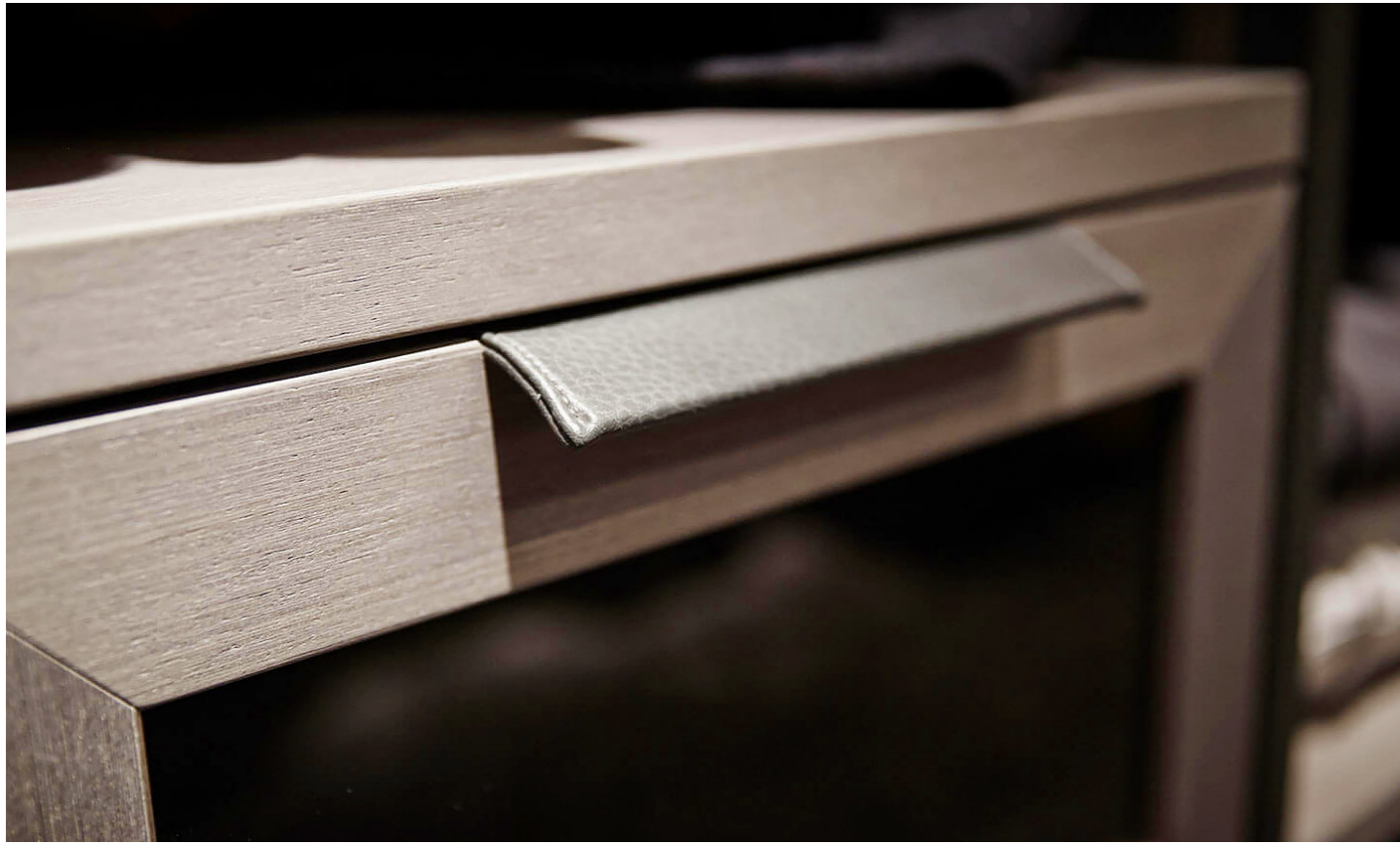
Please select a product category to proceed

1

WALK-IN CLOSETS

Custom made wardrobes are surely one of the best ways to go. They cater to your individual needs in the most detailed manner.



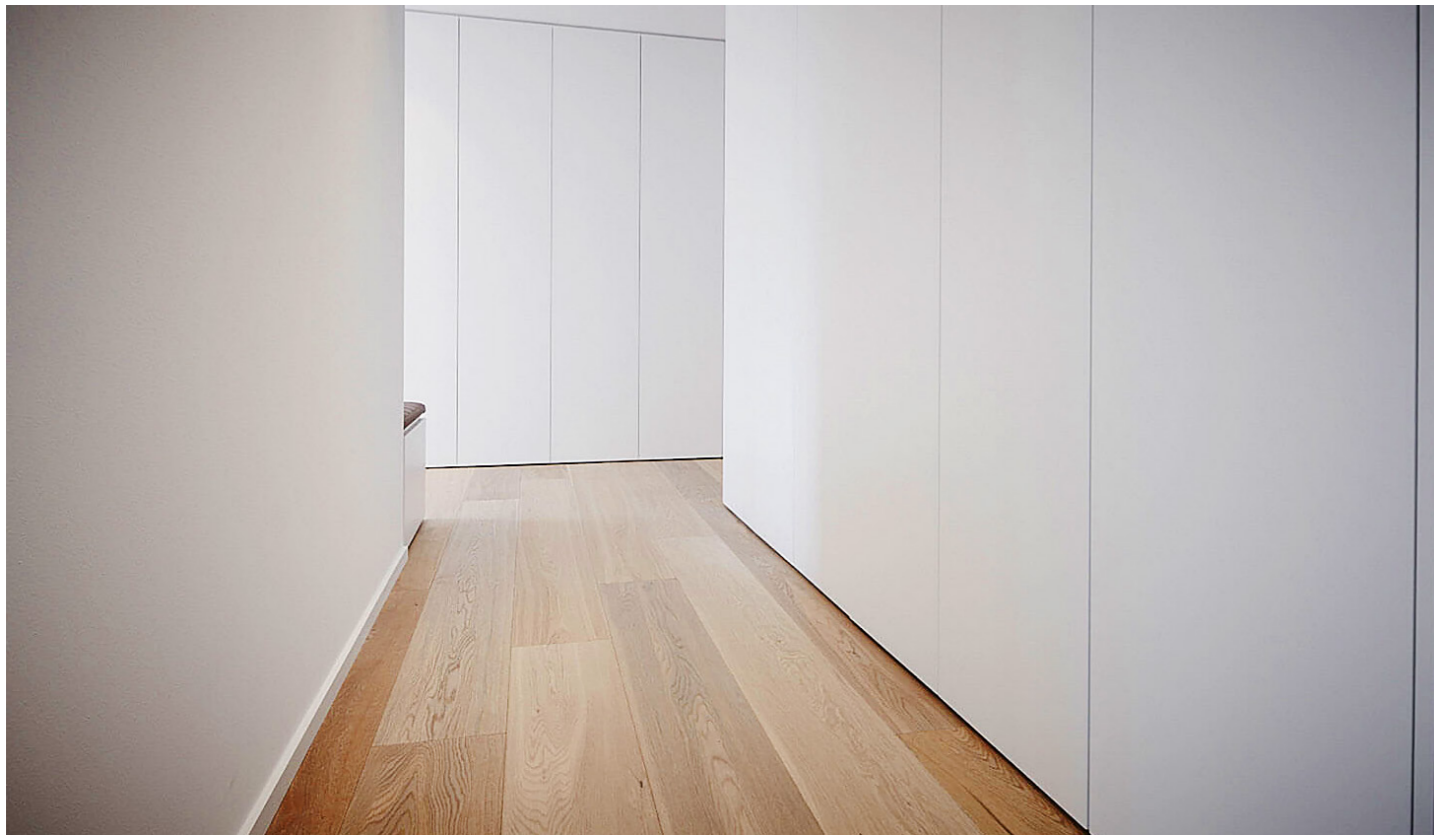


2

BUILT-IN CLOSETS

The finest materials starting from melamine to veneer are used to ensure a defined look and feel to the wardrobes.





3

SHELVING SYSTEMS

These systems make great open storage solutions for living rooms and offices. Easily designed to work around your space limitations.





4

ENTERTAINMENT CENTRE

Composed of several individual elements, which cover a large portion of a wall; they could also include a low cabinet unit. The elegant combinations enhance any living room.





5

SIDEBOARDS

Made entirely out of wood our sideboards offer a special appeal, emphasising their elegant, warm and timeless nature.





6

HOSPITALITY

Bespoke and luxurious joinery for the hospitality.





7

OFFICE FURNITURE

The right combination of materials, colours and finishes can make all the difference when it comes to office furniture. Attractive and sophisticated options that are structurally simple.





8

SHOP FITTINGS

Wood shelving can provide a unique and finished look for your store, you can typically get it pre-made or order custom-fit shelving.





9

VANITIES

While it might not be an essential piece of furniture for the bedroom, a luxurious vanity will immediately transform the room from plain to plush with little effort.





10

DOORS

Whichever door suits your home, you can be sure of its outstanding performance, with high-quality locking mechanisms and precision construction that provide strength and security.





11

OBJECTS

Highly customised furnishings that suit both living and work spaces.



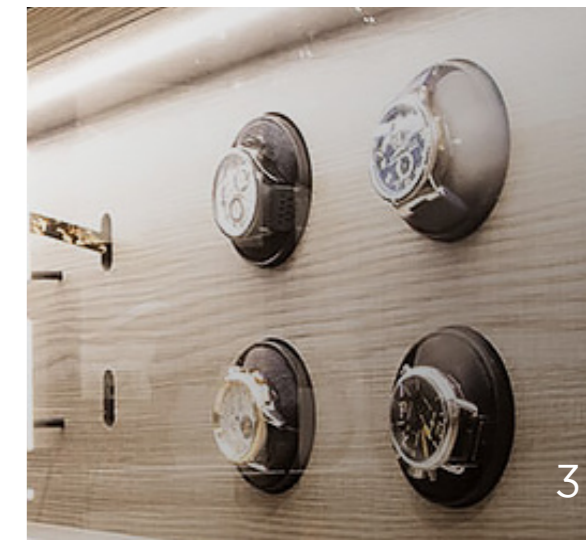
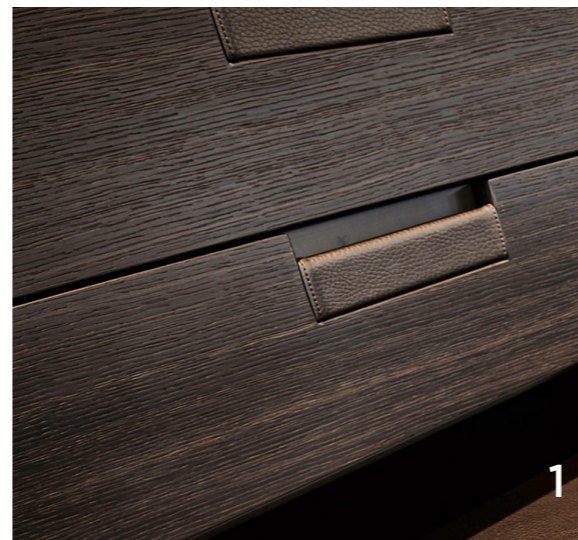


PRODUCT ACCESSORIES

SCHMALENBACH

PRODUCT ACCESSORIES

- 1. Pull out for ties and belts
- 2. Chest for glasses
- 3. Chest with watchwinders
- 4. Divider for drawer interior
- 5. Sliding door frame covered with wood veneer
- 6. Pull out for boots
- 7. Jewellery inserts
- 8. Hanging rod covered with artificial leather





PRODUCT ACCESSORIES

- 9. Side panel covered with artificial leather and wood strip for drilling row
- 10. Glass inserts for drawer
- 11. Built in safe behind moveable back panel
- 12. Stitched bench seat
- 13. Shoe shelves
- 14. Integrated lighting

VISIT US

Umm Hurair Showroom

Umm Hurair Road, P.O. Box 672
Dubai, United Arab Emirates
Tel: +971 4 358 2256
Mob: +971 55 256 7213
Email: contact@schmalenbach.ae



Al Gurg
Living



A MEMBER OF
**EASA SALEH AL GURG
GROUP**

-
- © All rights reserved. This document is the exclusive intellectual property of Easa Saleh Al Gurg Group. No part of this publication may be reproduced, distributed, or transmitted in any form or by any means, including photocopying, recording, or other electronic or mechanical methods, without the prior written permission of Easa Saleh Al Gurg Group (L.L.C).
 - This document is confidential and for internal use only (consistent with the purpose of the particular service). You may not disclose or share this document or any portion or summary of it externally including to your affiliates or with any third party.
 - Easa Saleh Al Gurg Group (L.L.C) does not take any liability for the content of this document. You shall indemnify and hold Easa Saleh Al Gurg (L.L.C) harmless to the fullest extent permitted by the applicable law against (i) any damages, liabilities, losses or expenses caused by unauthorized disclosure or infringement of copyright of this document and/or (ii) any claims by third parties arising out of third party's use or reliance on this document.
 - Some of the photographic images are owned by their respective copyright owner. Where possible the appropriate accreditation is given.
 - Product names, logos, and brands are property of their respective owners.